

Exchange Stream API

- [Overview](#)
- [Sample Application - C#, Java & Node.js](#)
- [Swagger Definition](#)
- [Typical Interactions with Stream API:](#)
- [Connection](#)
 - [Protocol](#)
 - [TCP / SSL Connection](#)
- [Basic Message Protocol](#)
 - [RequestMessage](#)
 - [ResponseMessage](#)
 - [Status / StatusMessage](#)
 - [ErrorCode](#)
- [Connection / ConnectionMessage](#)
- [Authentication / AuthenticationMessage](#)
- [Subscription / SubscriptionMessage](#)
 - [ChangeMessage](#)
 - [Change Message Segmentation](#)
 - [MarketSubscriptionMessage](#)
 - [Market Filtering / MarketFilter](#)
 - [Example marketSubscription](#)
 - [Market data field filtering / MarketDataFilter](#)
 - [Examples](#)
 - [MC / MarketChangeMessage](#)
 - [Building a price cache](#)
- [MarketDefinition Fields](#)
 - [OrderSubscriptionMessage](#)
 - [OrderFilter](#)
 - [Example](#)
 - [OCM / OrderChangeMessage](#)
 - [Building an order cache](#)
- [Example Output of Order Stream Message on Connection/Re-connection](#)
- [Heartbeat / HeartbeatMessage](#)
- [Re-connection / Re-subscription](#)
- [Performance Considerations](#)
- [Currency Support](#)
- [Runner Removals on the Order Stream](#)
- [Identifying Cancelled BSP Bets](#)
- [Line Markets](#)
- [Stream API Status - latency](#)
- [Stream Health](#)
- [Lapse Status Reason Code Possible Values](#)
- [Offline Documentation](#)
- [Known Issues](#)

Overview

The Exchange Streaming API provides low latency access to Betfair Exchange market data allowing you to subscribe to and efficiently track changes to market, price and order data.

The protocol is based on ssl sockets (normal) with a CRLF json protocol. We publish a definition of the schema of the json messages in the [Swagger format](#).

We maintain sample code in Java, C# and Node.js here: <https://github.com/betfair/stream-api-sample-code>

Sample Application - C#, Java & Node.js

A console based C#, Java and Node.js sample application is available for the Market & Order Streaming API and is available via <https://github.com/betfair/stream-api-sample-code>

Users wishing to interact with the Streaming API using one of these languages are strongly advised to make use of this sample code.

Swagger Definition

For users wishing to use other languages or develop their own implementation, we provide a swagger schema to allow browsing & code generation.

We recommend using Swagger Code Gen (<http://swagger.io/swagger-codegen/>) for generation,

- As a pre-requisite Java version 7 or higher must be installed
- Download both:
 - The Swagger Code Gen jar from: <https://oss.sonatype.org/content/repositories/releases/io/swagger/swagger-codegen-cli/2.2.1/swagger-codegen-cli-2.2.1.jar>

- The Swagger Definition from our GitHub repository: <https://github.com/betfair/stream-api-sample-code/blob/master/ESASwaggerSchema.json>
- Run the following command to view a list of available languages to generate code for: `java -jar swagger-codegen-cli-2.2.1.jar`
- Run the following command to generate the code: `java -jar swagger-codegen-cli-2.2.1.jar generate -i ESASwaggerSchema.json -l <LANGUAGE> -o <OUTPUT_DIRECTORY>`

The Swagger editor can also be used to view the domain model

- Use File -> Import File and choose the Swagger Definition downloaded from our [GitHub repository](#)

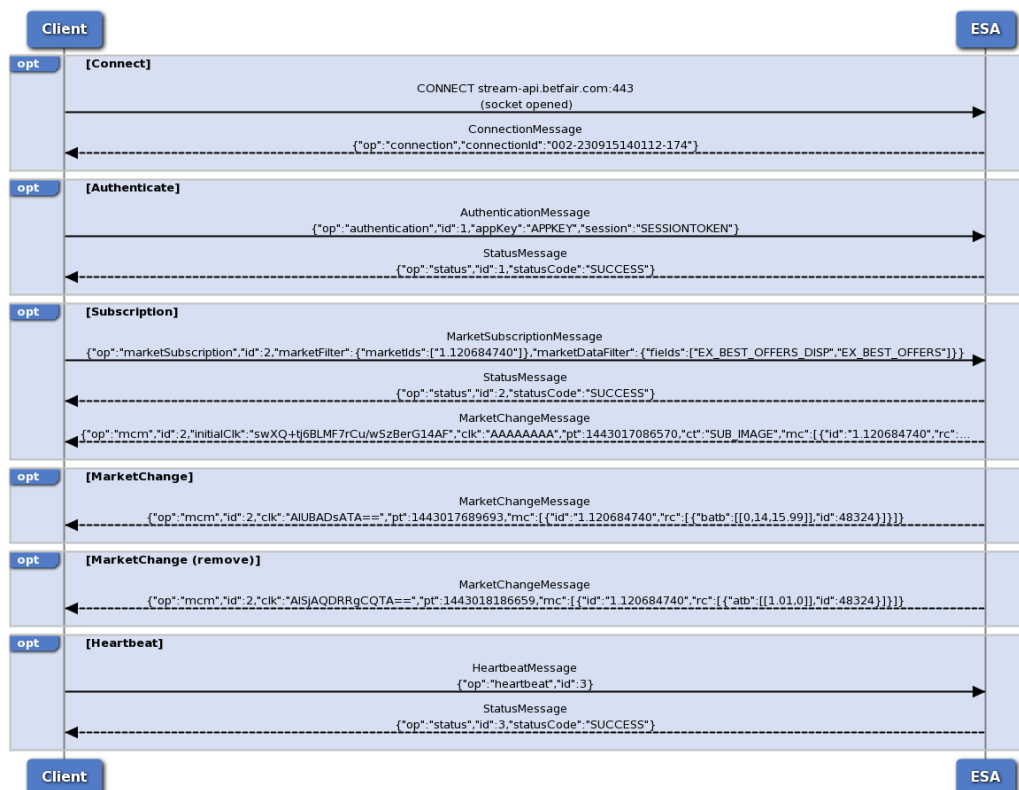
i A few points to note with Swagger:

- It's cross platform and we can't control how it works / behaves - but it does save a lot of error prone typing.
- Enums and Inheritance are a little flaky:
 - Enums for error codes / filters etc. are defined but are treated as strings in c# (so you will need to copy definitions from the swagger spec until this is fixed by swagger).
 - Inheritance is defined but not generated correctly - you will have to manually manipulate the op=<type> field
 - In c# JsonCreationConverter is the typical way to model inheritance
 - In java look at JsonSubTypes
- We are not a REST service - so only the swagger generated model package is relevant.

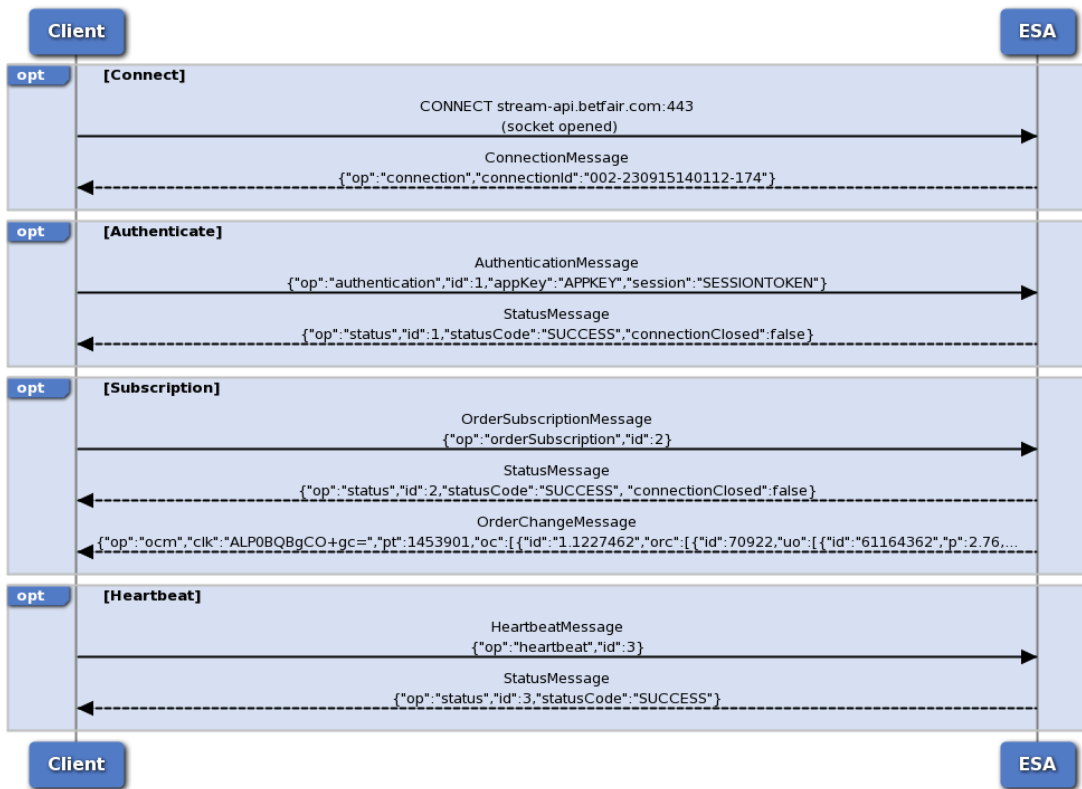
Typical Interactions with Stream API:

The typical API interactions are documented below (detail is below this).

Market Stream:



Order Stream:



Connection

Protocol

Every message is in json & terminated with a line feed (CRLF):

```
{json message}\r\n
```



Json Serializer Setup

As the protocol is CRLF delimited don't forget to turn-off Json pretty printing (C# has this on by default)

TCP / SSL Connection

Connection is established with an SSL socket to the following address:

External (SSL):

```
stream-api.betfair.com:443
```



Avoiding TIMEOUT on connection

Once you have established a connection you should send a message within 15 seconds to avoid receiving a TIMEOUT error

Pre-production (beta) endpoint



For pre-production (beta) releases the following URL should be used for integration testing only.

Integration Endpoint

stream-api-integration.betfair.com

Basic Message Protocol

Two base message classes exist:

- RequestMessage - These are messages sent to the server.
- ResponseMessage - These are messages received from the server.

Every child message type has:

- id - A unique counter you should supply on a RequestMessage and which will be supplied back on a ResponseMessage.
- op - This identifies the request type and may be used to switch / deserialize correctly



Note: Any fields representing time and having a long type will represent the UNIX Timestamps (See <https://currentmillis.com/> for conversions)

RequestMessage

RequestMessage is the base class for requests from the client; the discriminator is op=<message type>

Key fields:

- op=authentication - The AuthenticationMessage - authenticates your connection.
- op=marketSubscription - The MarketSubscriptionMessage - subscribes to market changes.
- op=orderSubscription - The OrderSubscriptionMessage - subscribes to order changes.
- op=heartbeat - The HeartbeatMessage - use if you need to keep a firewall open or want to test connectivity.



RequestMessages

- Remember to set op=<message type> - otherwise we can't decode the request
- Remember to set id=<unique sequence> - this will let you link requests with responses (these should be logged and provided on support calls)
- Every RequestMessage will receive a StatusMessage with the status of the call (linked by the id that you send).
 - **All errors apart from SUBSCRIPTION_LIMIT_EXCEEDED close the connection**

ResponseMessage

ResponseMessage is the base class for responses back to the client; the discriminator is op=<message type>

Key fields:

- op=connection - The ConnectionMessage sent on your connection.
- op=status - The StatusMessage (returned in response to every RequestMessage)
- op=mcm - The MarketChangeMessage that carries the initial image and updates to markets that you have subscribed to.
- op=ocm - The OrderChangeMessage that carries the initial image and updates to orders that you have subscribed to.



ResponseMessages

As mentioned earlier the id=<request id> and links your request with your response.

ChangeMessages carry the id of the original request that established the subscription

Status / StatusMessage

Every request receives a status response with a matching id.

Key fields:

- statusCode - The status of the request i.e success / fail

- SUCCESS - Call processed correctly
- FAILURE - Call failed (inspect errorCode and errorMessage for reason)
- connectionClosed - Boolean set to true if the connection was closed as a result of a failure
- errorCode - The type of error in case of a failure - see the swagger spec / enum.
- errorMessage - Additional message in case of a failure
- connectionsAvailable – The number of additional connections you can open (populated only in response to authentication requests)

ErrorCode

This categorizes the various error codes that could be expected (these are subject to change and extension)

Category	ErrorCode	Description
Protocol		General errors not sent with id linking to specific request (as no request context)
	INVALID_INPUT	Failure code returned when an invalid input is provided (could not deserialize the message)
	TIMEOUT	Failure code when a client times out (i.e. too slow sending data)
Authentication		Specific to authentication
	NO_APP_KEY	Failure code returned when an application key is not found in the message
	INVALID_APP_KEY	Failure code returned when an invalid application key is received
	NO_SESSION	Failure code returned when a session token is not found in the message
	INVALID_SESSION_INFORMATION	Failure code returned when an invalid session token is received
	NOT_AUTHORIZED	Failure code returned when client is not authorized to perform the operation
	MAX_CONNECTION_LIMIT_EXCEEDED	Failure code returned when a client tries to create more connections than allowed to
	TOO_MANY_REQUESTS	Failure code returned when a client makes too many requests within a short time period
Subscription		Specific to subscription requests
	SUBSCRIPTION_LIMIT_EXCEEDED	Customer tried to subscribe to more markets than allowed to - set to 200 markets by default
	INVALID_CLOCK	Failure code returned when an invalid clock is provided on re-subscription (check initialClk / clk supplied)
General		General errors which may or may not be linked to specific request id
	UNEXPECTED_ERROR	Failure code returned when an internal error occurred on the server
	CONNECTION_FAILED	Failure code used when the client / server connection is terminated

Connection / ConnectionMessage

This is received by the client when it successfully opens a connection to the server

Key fields:

- connectionId - This is a unique identifier that **you must supply for support**.



Initial ConnectionMessage

On establishing a connection a client receives a ConnectionMessage - the **connectionId must be logged & supplied on any support queries**:

```
{ "op": "connection", "connectionId": "002-230915140112-174" }
```

Authentication / AuthenticationMessage

This message is the first message that the client must send on connecting to the server - you must be authenticated before any other request is processed.

Key fields:

- op=authentication - This is the operation type
- appKey - This is your application key to identify your application
- session - The session token generated from [API login](#).



Common Authentication Errors

Some common authentication errors that you should handle - these are defined on ErrorCodes enum (these will all close your connection):

- NO_APP_KEY / INVALID_APP_KEY - Check you are using the correct app key
- NO_SESSION / INVALID_SESSION_INFORMATION - Check the session is current
- NOT_AUTHORIZED - Check that you are using the correct appkey / session and that it has been setup by BDP
- MAX_CONNECTION_LIMIT_EXCEEDED - Check that you are not creating too many connections / are closing connections properly.
- TOO_MANY_REQUESTS - Check that you are not creating/closing connections too frequently

Subscription / SubscriptionMessage

This message changes the client's subscription - there are currently two subscription message types:

- op=marketSubscription- MarketSubscriptionMessage which streams:
 - op=mcm - MarketChangeMessage - the price changes for a market
- op=orderSubscription- OrderSubscriptionMessage which streams:
 - op=ocm - OrderChangeMessage - the order changes for a market

On creating a subscription you will receive:

- StatusMessage confirming the status of your request
- A stream of ChangeMessages linked with the id of the request which is composed of:
 - Initial image
 - Deltas to the initial image

It is possible to subscribe multiple times - each replaces the previous (each will send a new initial image and deltas) - they are not additive.

Key fields on a SubscriptionMessage:

- segmentationEnabled=true
 - segmentation breaks up large messages and improves: end to end performance, latency, time to first and last byte
 - see the topic on change message segmentation for a full explanation of how this works.
- conflateMs - Specifies a forced conflation rate (in milliseconds) - **Please note:** the field value will be 180000 if you access the Stream API using a Delayed App Key or have an account delay in place when using the Live App Key.
- heartbeatMs - Specifies a minimum interval that a client would expect to receive a message (in milliseconds) - bounds are 500 to 5000 milliseconds.
 - If no change is delivered in this interval then an empty change message will be sent with a ChangeType.HEARTBEAT
- initialClk & clk - these two sequence tokens allow for faster recovery in the event of a disconnection:
 - If supplied (with identical subscription criteria) you will receive a delta to your previous state rather than a full initial image
 - see the topic on re-subscription for a full explanation of how this works.

ChangeMessage

This message is the payload that delivers changes (both initial image & updates) to a client - there are currently two change message types:

- op=mcm - MarketChangeMessage
- op=ocm - OrderChangeMessage



The Order Changes and Market Changes are being produced by 2 independent systems so we can give no guarantee as to the order in which they will be sent.

Key fields on a ChangeMessage:

- ct= ChangeType - this enumeration is used to identify the type of change
 - SUB_IMAGE - The initial image returned from a subscribe. May also happen while subscription is on-going and should replace local cache entirely.
 - RESUB_DELTA - A patch returned from a resubscribe
 - HEARTBEAT - An empty message published if no data has been sent within heartbeatMs
 - We send these to maintain the connection to you and detect closed connections
 - You can use the heartbeatMs to verify that you are still connected

- <null / not set> - An update message
- segmentType - SegmentType - this enumeration identifies multi-part segmented messages:
 - SEG_START - Start of a segmented message
 - SEG - Middle part of a segmented message
 - SEG_END - Last part of a segmented message
 - <null / not set> - A non-segmented message
- conflateMs - the actual conflation being used
 - This might be different to what you specified - if you account is for instance delayed or your request was out of bounds
- status - Stream status: set to null if the exchange stream data is up to date and **503** if the downstream services are experiencing latency
- heartbeatMs - the actual heartbeat being used
 - This might be different to what you specified as we bounds check
 - You can use this to verify your connection is live (as you should receive 1 message within this time period).
- pt - publishTime - the time we sent the message
- initialClk & clk - these two sequence tokens allow for faster recovery in the event of a disconnection:
 - If we send these then they should be stored
 - see the topic on re-subscription for a full explanation of how this works.



Heartbeat ChangeMessages

heartbeatMs is a guarantee of how often (even with no changes) you will receive a ChangeMessage; i.e.:

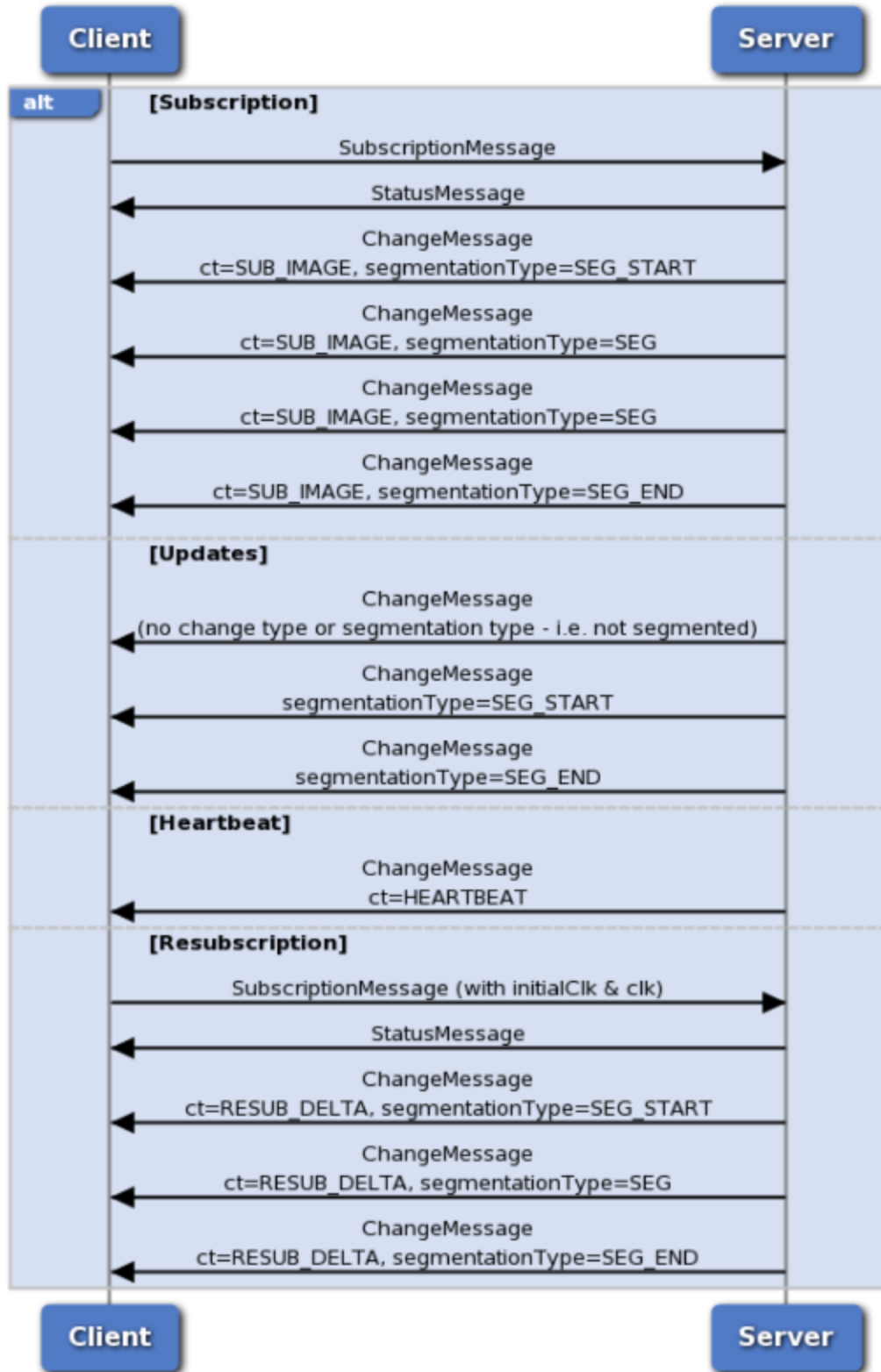
If heartbeatMs= 500 and your subscription has not changed in 500ms then we will send an empty ChangeMessage with ct=HEARTBEAT

(this verifies your connection is live and processing data)

Change Message Segmentation

The below shows the key interactions for subscription & changes with segmentation applied:

Subscription, Segmentation & Change Types



Typically on changing your subscription you will want to clear any local cache you maintain.

✓ Initial Image Handling

- How can I detect the start of an initial image & clear my cache?

- ct=ChangeType.SUB_IMAGE and segmentType=null or SegmentType.SEG_START indicates the start of a new image
- How can I detect the end of an initial image?
 - ct=ChangeType.SUB_IMAGE and segmentType=null or SegmentType.SEG_END indicates the end of a new image
- When I change Subscription how do I safely ignore messages for a previous subscription?
 - All ChangeMessages carry have id=<request id> this allows safe disposal during subscription change

MarketSubscriptionMessage

This subscription type is used to receive price changes for one or more markets; your subscription criteria determine what you see.



Coarse vs Fine Grain Subscriptions

It is preferable to use coarse grain subscriptions (subscribe to a super-set) rather than fine grain (specific market ids).

- If you find yourself frequently changing subscriptions you probably want to find a wider super-set to subscribe to

A MarketSubscription has two types of filter:

- marketFilter - MarketFilter - this is a horizontal filter of markets that you require (i.e. rows)
- marketDataFilter - MarketDataFilter - this is a vertical filter of fields that you require (i.e. columns)

Limiting the amount of data that you consume will make your initial image much smaller (and faster) & suppress changes that are uninteresting to you.

Market Filtering / MarketFilter

As with the APING API users have the ability to filter the market data they get from the new Exchange Stream API (ESA).

All subscriptions are evaluated with a few default criteria:

- Standard jurisdictional filtering that restricts visibility (mirroring site behavior)
- Permissions that control:
 - Specific sports that you are entitled for
 - A maximum consumption limit (exceeding this will result in an error with details of the limit: ErrorCode.SUBSCRIPTION_LIMIT_EXCEEDED)

Users can then specify the following filters when they subscribe to ESA:

Filter name	Type	Mandatory	Description
marketIds	Set<String>	No	If no marketIds passed user will be subscribed to all markets
bspMarket	Boolean	No	Restrict to bsp markets only, if True or non-bsp markets if False. If not specified then returns both BSP and non-BSP markets
bettingTypes	Set<BettingType>	No	Restrict to markets that match the betting type of the market (i.e. Odds, Asian Handicap Singles, or Asian Handicap Doubles)
eventTypes	Set<String>	No	Restrict markets by event type associated with the market. (i.e., "1" for Football, "7" for Horse Racing, etc)
eventIds	Set<String>	No	Restrict markets by the event id associated with the market.
turnInPlayEnabled	Boolean	No	Restrict to markets that will turn in play if True or will not turn in play if false. If not specified, returns both.
marketTypes	Set<String>	No	Restrict to markets that match the type of the market (i.e., MATCH_ODDS, HALF_TIME_SCORE). You should use this instead of relying on the market name as the market type codes are the same in all locales
venues	Set<String>	No	Restrict markets by the venue associated with the market. Currently only Horse Racing markets have venues.
countryCodes	Set<String>	No	Restrict to markets that are in the specified country or countries. Please note: default value is 'GB' when the correct country code cannot be determined.
raceTypes	Set<String>	No	Restrict to markets of a specific raceType. Valid values are - Harness, Flat, Hurdle, Chase, Bumper, NH Flat, Steeple (AUS/NZ races) NO_VALUE

Example marketSubscription

For example a subscription message with almost all filters enabled will look something like this:

```
{ "op": "marketSubscription", "id": 2, "marketFilter": { "marketIds": [ "1.120684740" ], "bspMarket": true, "bettingTypes": [ "ODDS" ], "eventTypeIds": [ "1" ], "eventIds": [ "27540841" ], "turnInPlayEnabled": true, "marketTypes": [ "MATCH_ODDS" ], "countryCodes": [ "ES" ] }, "marketDataFilter": {} }
```



Subscriptions with no matching markets

We don't verify your subscription criteria as you could potentially subscribe to either a wild card (which would include future markets) or a future marketid which we do not have yet but would send on arrival

Market data field filtering / MarketDataFilter

A market data filter restricts the fields that you get back (and only if the fields have changed).

Key fields:

- fields - A set of field filter flags (see below)
- ladderLevels - For depth based ladders the number of levels to send (1 to 10). 1 is best price to back or lay etc.



Ladder Levels Behaviour

When bdatb and bdatl are sent with an empty array ("bdatb:[]"), this indicates that there's an update but this has been filtered out due to the "ladderLevels" marketDataFilter i.e. the update falls outside of the "ladderLevels" specified.

The field filter flags are defined as:

Filter name	Fields:	Type	Description
EX_BEST_OF FERS_DISP	bdatb, bdatl	level, price, size	Best prices including Virtual Bets - depth is controlled by ladderLevels (1 to 10) - Please note: The virtual price stream is updated ~150 m/s after non-virtual prices. Virtual prices are calculated for all ladder levels.
EX_BEST_OF FERS	batb, batl	level, price, size	Best prices not including Virtual Bets - depth is controlled by ladderLevels (1 to 10)
EX_ALL_OFFE RS	atb, atl	price, size	Full available to BACK/LAY ladder
EX_TRADED	trd	price, size	Full traded ladder
EX_TRADED_ VOL	tv	size	Market and runner level traded volume
EX_LTP	ltp	price	Last traded price
EX_MARKET_ DEF	marketDe finition	MarketD efinition	Send market definitions.
SP_TRADED	spb, spl	price, size	Starting price ladder
SP_PROJECT ED	spn, spf	price	Starting price projection prices

Examples

Multiple field filters may be combined; a subscription message that contains data fields should look like the following:

```
{ "op": "marketSubscription", "id": 2, "marketFilter": { "marketIds": [ "1.120684740" ] }, "marketDataFilter": { "fields": [ "EX_BEST_OFFERS_DISP", "EX_BEST_OFFERS", "EX_ALL_OFFERS", "EX_TRADED", "EX_TRADED_VOL", "EX_LTP", "EX_MARKET_DEF", "SP_TRADED", "SP_PROJECTED" ] } }
```

The below example shows how to correctly use the **ladderLevels** marketDataFilter:

```
{ "op": "marketSubscription", "id": 1, "marketFilter": { "marketIds": [ "1.134085859" ] }, "marketDataFilter": { "ladderLevels": 2, "fields": [ "EX_MARKET_DEF", "EX_BEST_OFFERS" ] } }
```



Correctly configuring field filters

Correctly configuring field filters can help by:

- Reducing the size (and time) of initial images
- Reducing the rate of change (as only changes matching your field filter are sent)

MC / MarketChangeMessage

This is the ChangeMessage stream of data we send back to you once you subscribe to the market stream.

Key fields:

- <as for ChangeMessage>
- mc / MarketChange - this list of market changes contains the changes the markets that you have subscribed to.
 - img / Image - replace existing prices / data with the data supplied: it is not a delta (or null if delta)
 - marketDefinition / MarketDefinition - this is sent in full (but only if it has changed)
 - rc / RunnerChange - this is sent to supply the details of a runner (namely prices)
 - con / Conflated = true - if this is sent then more than one change is combined in this message (purely informational).
 - Values - **Please note:** these are only sent if the value has changed.
 - tv - Traded Volume
 - ltp - Last Traded Price
 - spn - Starting Price Near
 - spf - Starting Price Far
 - Level / Depth Based Ladders (level, price, size - triples - keyed by level):
 - size=0 - indicates a remove
 - batb / batl - Best Available To Back / Best Available To Lay (non-virtual)
 - bdatb / bdatl - Best Display Available To Back / Best Display Available To Lay (virtual)
 - Price point / full depth Ladders (price, size - tuples - keyed by price):
 - size=0 - indicates a remove
 - atb / atl - Available To Back / Available To Lay (these are the raw / full depth non-virtual prices)
 - spb / spl - Starting Price (Available To) Back / Starting Price (Available To) Lay (please be aware that these values are aligned with atb / atl)
 - trd - Traded

Building a price cache

Most of the change based data (RunnerChange) is delta based - this means a few rules:

- img / Image - if this is set to true then you should replace this item in your cache
- Values - the values sent are nullable & are not sent if they are not changed (i.e. if tv has not changed then there will be no field in the message)
- Level / Depth Based ladders
 - [0, 1.2, 20] -> Insert / Update level 0 (top of book) with price 1.2 and size 20
 - [0, 1.2, 0] -> Remove level 0 (top of book) i.e. ladder is now empty
- Price point / full depth ladders
 - [1.2, 20] -> Insert / Update price 1.2 with size 20
 - [1.2, 0] -> Remove price 1.2 i.e. there is no size at this price



Examples

You will always receive an update at every position in the ladder that changed so you'll never have to assume anything based on the message you receive.

Seeing [position,0,0] means that there's nothing at that position anymore (and hence [0,0,0] means there's nothing in the entire ladder anymore)

- **Placed the first bet on a selection**

```
`"batl":[[0,1.4,2],[1,0,0],[2,0,0],[3,0,0],[4,0,0],[5,0,0],[6,0,0],[7,0,0],[8,0,0],[9,0,0]]`
```

- **Placed a second bet that didn't disturb the first bet's position**

```
`"batl":[[1,1.5,2]]`
```

- **Placed a third bet that bumped the previous two down the ladder**

```
`"batl":[[2,1.5,2],[1,1.4,2],[0,1.3,2]]`
```

- **Cancelled the top position causing the other positions to move up (and the bottom position to become empty)**

```
`"batl":[[2,0,0],[1,1.5,2],[0,1.4,2]]`
```

- **Cancelled by market to remove the remaining 2 positions in one go**

```
`"batl":[[1,0,0],[0,0,0]]`
```

MarketDefinition Fields

The following fields are returned within the marketDefinition.

Field Name	Description	Type
Id	Market Id - the id of the market	string
Venue	The venue - applies to horse racing and greyhound markets only	string
bspMarket	If 'true' the market supports Betfair SP betting	boolean
turnInPlayEnabled	If 'true' the market is set to turn in-play	boolean
persistenceEnabled	If 'true' the market supports 'Keep' bets if the market is to be turned in-play	boolean
marketBaseRate	The commission rate applicable to the market	double
eventId	The unique id for the event	string
eventTypeid	The unique eventTypeid that the event belongs to	string
numberOfWinners	The number of winners on a market	integer
bettingType	The market betting type i.e. ODDS,ASIAN_HANDICAP_DOUBLE_LINE, ASIAN_HANDICAP_SINGLE_LINE	string
marketType	Market base type	string
marketTime	The market start time	string
suspendTime	The market suspend time	string
bspReconciled	True if the market starting price has been reconciled	boolean
complete	If false, runners may be added to the market	boolean
inPlay	True if the market is currently in play	boolean
crossMatching	True if cross-matching is enabled for this market.	boolean
runnersVoidable	True if runners in the market can be voided	boolean
numberOfActiveRunners	The number of runners that are currently active. An active runner is a selection available for betting	integer
betDelay	The number of seconds an order is held until it is submitted into the market. Orders are usually delayed when the market is in-play	boolean
status	The status of the market, for example, OPEN, SUSPENDED, CLOSED (settled), etc.	string
regulators	The market regulators	string
discountAllowed	Indicate whether or not the users discount rate is taken into account in this market	boolean
timezone	This is the timezone in which the event is taking place	string
openDate	The scheduled start date and time of the event. This is GMT by default	date
version	A non-monotonically increasing number indicating market changes	long
name	The name of the market	string
eventName	The name of the event	string

OrderSubscriptionMessage

This subscription type is used to receive order changes; the subscription message has one type of filter

- orderFilter (optional)

OrderFilter

This optional filter already filters by your account, but additional data shaping is supported

--	--	--	--	--

Filter name	Type	Mandatory	Default	Description
accountIds	Set<Integer>	No	null	This is for internal use only & should not be set on your filter (your subscription is already locked to your account).
includeOverallPosition	Boolean	No	true	Returns overall / net position (OrderRunnerChange.mb / OrderRunnerChange.ml)
customerStrategyRefs	Set<String>	No	null	Restricts to specified customerStrategyRefs (specified in placeOrders) ; this will filter orders and StrategyMatchChanges accordingly (Note: overall position is not filtered)
partitionMatchedByStrategyRef	Boolean	No	false	Returns strategy positions (OrderRunnerChange.smc=Map<customerStrategyRef, StrategyMatchChange>) - these are sent in delta format as per overall position.

Example

```
{"op":"orderSubscription","orderFilter":{"includeOverallPosition":false,"customerStrategyRefs":["betstrategy1"],"partitionMatchedByStrategyRef":true},"segmentationEnabled":true}
```

OCM / OrderChangeMessage

This is the ChangeMessage stream of data we send back to you once you subscribe to the order stream.

Key fields:

- <as for ChangeMessage>
- oc / OrderAccountChange - the modifications to account's orders (will be null on a heartbeat)
 - closed - indicates when the market is closed
 - id / Market Id - the id of the market the order is on
 - fullImage - replace existing data at market level with the data supplied: it is not a delta (or null if delta)
 - orc / Order Changes - a list of changes to orders on a runner
 - fullImage - replace existing data at runner level with the data supplied: it is not a delta (or null if delta)
 - id / Selection Id - the id of the runner (selection)
 - hc / Handicap - the handicap of the runner (selection) (null if not applicable)
 - uo / Unmatched Orders - orders on this runner that are unmatched
 - Every order change is sent in full; the transient on a change to EXECUTION_COMPLETE is sent (but it would not be sent on initial image)
 - id / Bet Id - the id of the order
 - p / Price - the original placed price of the order
 - s / Size - the original placed size of the order
 - bsp / BSP Liability - the BSP liability of the order (null if the order is not a BSP order)
 - side / Side - the side of the order
 - status / Status - the status of the order (E = EXECUTABLE, EC = EXECUTION_COMPLETE)
 - pt / Persistence Type - whether the order will persist at in play or not (L = LAPSE, P = PERSIST, MOC = Market On Close)
 - ot / Order Type - the type of the order (L = LIMIT, MOC = MARKET_ON_CLOSE, LOC = LIMIT_ON_CLOSE)
 - pd / Placed Date - the date the order was placed
 - md / Matched Date - the date the order was matched (null if the order is not matched)
 - **cd / Cancelled Date - the date the order was cancelled (null if the order is not cancelled)**
 - ld / Lapsed Date - the date the order was lapsed (null if the order is not lapsed)
 - lsrc/Lapse Status Reason Code - the reason that some or all of this order has been lapsed (null if no portion of the order is lapsed)
 - avp / Average Price Matched - the average price the order was matched at (null if the order is not matched)
 - sm / Size Matched - the amount of the order that has been matched
 - sr / Size Remaining - the amount of the order that is remaining unmatched
 - sl / Size Lapsed - the amount of the order that has been lapsed
 - sc / Size Cancelled - the amount of the order that has been cancelled
 - sv / Size Voided - the amount of the order that has been voided
 - rac / Regulator Auth Code - the auth code returned by the regulator
 - rc / Regulator Code - the regulator of the order
 - rfo / Reference Order - the customer supplied order reference
 - rfs / Reference Strategy - the customer supplied strategy reference used to group orders together - default is ""
 - Price point / full depth Ladders (price, size - tuples - keyed by price) of matches:
 - mb / Matched Backs - matched amounts by distinct matched price on the Back side for this runner
 - ml / Matched Lays - matched amounts by distinct matched price on the Lay side for this runner

Building an order cache

An order cache is somewhat simpler as orders are sent in full (on change) and only matches need delta merging

- fullImage - if the market or runner's fullImage value is set to true then you should replace this item in your cache N.B. it is possible for the fullImage flag to be sent with an **empty** update for a market/runner which indicates you no longer have any position on that market/runner and it can be removed from your cache completely
- Orders - replace each order according to order id.
- Price point / full depth ladders
 - [1.2, 20] -> Insert / Update price 1.2 with size 20
 - [1.2, 0] -> Remove price 1.2 i.e. there is no size at this price
 - An empty list of points also means the ladder is now empty



Currencies

Market subscriptions - are always in underlying exchange currency - GBP. The default roll-up for GBP is £1 for **batb / batl** and **bdatb / bdatl**. This means that stakes of less than £1 (or currency equivalent) are rolled up to the next available price on the odds ladder. For **atb / atl** there is no roll-up. Available volume is displayed at all prices including those with less than £2 available.

Orders subscriptions - are provided in the currency of the account that the orders are placed in.



Unmatched Orders

New subscriptions: Will receive an initial image with only E - Executable orders (unmatched).

Live subscriptions: Will receive a transient of the order to EC - Execution Complete as the order transits into that state (allowing you to remove the order from your cache).

Please note: EXECUTION_COMPLETE (fully matched) orders are only returned when transitioning from EXECUTABLE to EXECUTION_COMPLETE. The full details of EXECUTION_COMPLETE orders can only be viewed using listCurrentOrders/listMarketBook using orderProjections.



Market Level Snapshots

During normal streaming, you may on rare occasions receive a market-level snapshot, in which case you should replace the item in your cache. The update will be a fullImage, as shown in the example below

```
{
  "clk": "AIEIAJgiAIYjAMAhAOsm",
  "oc": [{"orc": [{"uo": [{"status": "E", "rfs": "", "sm": 0, "pt": "L", "sr": 2, "rc": "REG_GGC", "sv": 0, "side": "B", "p": 990, "s": 2, "pd": 1603894536000, "sl": 0, "sc": 0, "ot": "L", "rfo": "", "id": "215144775671", "rac": ""}], "id": 30246, "fullImage": true}], "id": "1.174743281", "fullImage": true}],
  "pt": 1603895058618,
  "op": "ocm"
}
```

Example Output of Order Stream Message on Connection/Re-connection

Here's an example showing the data provided following a connection/re-connection to the Order Stream API. The example shows matched backs on two separate markets one of which has a size remaining of 0.25.

Example of Order Stream Output (reconnection) - with size remaining

```
{
  "op": "ocm",
  "id": 6,
  "initialClk": "GpOH0JwBH762w50BHKKomJ0BGpzR5ZoBH5mWsJwB",
  "clk": "AAAAAAAAAAAAAAAA==",
  "conflateMs": 0,
  "heartbeatMs": 5000,
  "pt": 1468943673782,
  "ct": "SUB_IMAGE",
  "oc": [{
    "id": "1.125657695",
    "orc": [{
      "fullImage": true,
      "id": 48756,
      "mb": [
        [1.4, 2]
      ]
    }]
  }, {
    "id": "1.125657760",
    "orc": [{
      "fullImage": true,
      "id": 151478,
      "uo": [{
        "id": "71352090695",
        "p": 12,
        "s": 5,
        "side": "B",

```

```

        "status": "E",
        "pt": "L",
        "ot": "L",
        "pd": 1468919099000,
        "md": 1468933833000,
        "avp": 12,
        "sm": 4.75,
        "sr": 0.25,
        "sl": 0,
        "sc": 0,
        "sv": 0
    }],
    "mb": [
        [12, 4.75]
    ]
}]]
}

```

Remaining 0.25 is then matched on marketId **1.125657760**

Example of Order Stream Output - with size remaining matched

```

{
  "op": "ocm",
  "id": 10,
  "initialClk": "GtD10ZwBH50JxZ0BHK75mZ0BGsKq6JoBH4THsZwB",
  "clk": "AAAAAAAAAAAAAAAA=",
  "conflateMs": 0,
  "heartbeatMs": 5000,
  "pt": 1468944647413,
  "ct": "SUB_IMAGE",
  "oc": [{
    "id": "1.125670254",
    "orc": [{
      "fullImage": true,
      "id": 5643663
    }]
  }, {
    "id": "1.125657760",
    "orc": [{
      "fullImage": true,
      "id": 151478,
      "mb": [
        [12, 5]
      ]
    }]
  }, {
    "id": "1.125657695",
    "orc": [{
      "fullImage": true,
      "id": 48756,
      "mb": [
        [1.4, 2]
      ]
    }]
  }
]
}

```

This is an explicit heartbeat request (in addition to server heartbeat interval which is automatic).

This functionality should not normally be necessary unless you need to keep a firewall open.

✔ Do I need to use `HeartbeatMessage`?

No - under normal circumstances the subscription level `ChangeType.HEARTBEAT` is an acceptable guarantee of connection health.

Use the `HeartbeatMessage` only if you need to keep a firewall open - as it will incur some performance penalty (as a response will block your connection)

Re-connection / Re-subscription

If a client is disconnected a client may connect, authenticate and re-subscribe.

Prerequisite steps:

- Store your subscription criteria (re-subscribe will only work correctly with identical subscription criteria).
- Store `initialClk` (normally only initial image) & `Clk` (normally on every non-segmented message or a `SEG_END`) on any change message they are sent on.

Connection is broken.

- Connect & Authenticate as normal
- Subscribe setting `initialClk` and `Clk` to the last values sent on the subscription
- Change message with `ChangeType.RESUB_DELTA` is sent - this will patch your cache
- Some markets might have `img=true` set indicating they are either new or can't be patched.

✔ Easiest way to implement re-subscribe

- Store any new subscription message you send as a "pending subscription"
- Store this as a "active subscription" once you get your initial image
- Update the `initialClk` & `clk` on the subscription message with any non-null values
- Resend this message after re-connecting

Performance Considerations

Here are a few tips on performance which are worth bearing in mind:

✔ Performance tips

- A single market subscription & a subscription to all markets have an identical latency:
 - Cost is identical as the two subscriptions above would evaluate in sequence and thus with the same average latency.
 - Initial image is more costly to send than extra updates.
 - Limiting data with appropriate filters reduces initial image time
- Segmented data will always out perform non-segmented data:
 - You will be processing a buffer while another is in-flight and another is being prepared to send
- Writes to your connection are directly effected by how quickly you consume data & clear your socket's buffer
 - Consuming data slowly is effectively identical to setting conflation.
 - If you receive `con=true` flag on a market - then you are consuming data slower than the rate of delivery.

Currency Support

The Exchange Stream API supports GBP currency only.

Those looking to convert data from GBP to a different currency should use [listCurrencyRates](#) to do so.

✔ Currencies

Market subscriptions - are always in underlying exchange currency - GBP. The default roll-up for GBP is £1 for **batb / batl** and **bdatb / bdatl**. This means that stakes of less than £1 (or currency equivalent) are rolled up to the next available price on the odds ladder. For **atb / atl** there is no roll-up. Available volume is displayed at all prices including those with less than £2 available.

Orders subscriptions - are provided in the currency of the account that the orders are placed in.

Runner Removals on the Order Stream

When a Rule 4 Runner Removal occurs in a Horse Race the price of matched bets on remaining runners are reduced by a Reduction Factor.

For these matched bets, you will receive on the Order Stream both a **uo** for the affected bet and the relevant updates to **mb** or **ml** (reducing the matched volume at the original matched price and adding volume at the new reduced price).

Initial bet placement at price 12

```
{ "op": "ocm", "id": 2, "clk": "AK0CAPsBALEc", "pt": 1467219304831, "oc": [ { "id": "1.102151675", "orc": [ { "fullImage": true, "id": 6113662, "uo": [ { "id": "10822867886", "p": 12, "s": 2, "side": "B", "status": "E", "pt": "L", "ot": "L", "pd": 1467219304000, "sm": 0, "sr": 2, "sl": 0, "sc": 0, "sv": 0, "rac": "", "rc": "REG_GGC" } ] } ] ] }
```

Bet fully matched at price 12

```
{ "op": "ocm", "id": 2, "clk": "AK0CAPsBALMC", "pt": 1467219316709, "oc": [ { "id": "1.102151675", "orc": [ { "id": 6113662, "uo": [ { "id": "10822867886", "p": 12, "s": 2, "side": "B", "status": "EC", "pt": "L", "ot": "L", "pd": 1467219304000, "md": 146721931600, "avp": 9.47, "sm": 2, "sr": 0, "sl": 0, "sc": 0, "sv": 0 } ], "mb": [ [ 12, 2 ] ] } ] ] }
```

Runner removed (and so bet reduced in price to 9.47)

```
{ "op": "ocm", "id": 2, "clk": "AK0CAJACALsC", "pt": 1467219376611, "oc": [ { "id": "1.102151675", "orc": [ { "id": 6113662, "uo": [ { "id": "10822867886", "p": 12, "s": 2, "side": "B", "status": "EC", "pt": "L", "ot": "L", "pd": 1467219304000, "md": 146721931600, "avp": 9.47, "sm": 2, "sr": 0, "sl": 0, "sc": 0, "sv": 0 } ], "mb": [ [ 9.47, 2 ], [ 12, 0 ] ] } ] ] }
```

See the **avp** in the **uo** record showing the new price of 9.47 and see the two entries in **mb**, one to remove the previously added size of 2 at price point 12 and one to add the size of 2 into the new price point of size 9.47.

Bets placed on the actual removed runner will be voided/lapsed (for matched/unmatched bets respectively) and these will also be sent through on the Order Stream.

Identifying Cancelled BSP Bets

Whilst BSP bets cannot be cancelled in general, in the scenario where a Limit Price applied to the BSP bet is updated this is modelled as a Cancellation of the original bet with the original Limit Price and a Place of a new bet with the new Limit Price.

In this scenario, the cancellation of the original bet can be identified by looking at the "Cancelled Date" field ("cd") on the "Unmatched Orders" object ("uo") - N.B. there will be no "Size Cancelled" ("sc") because a BSP bet does not have any Size before reconciliation.

Line Markets

Line markets being sent on the Market Stream can be identified by the **bettingType** field of **MarketDefinition** (with value of "LINE").

The **MarketDefinition** of Line markets provide some additional fields that will be null for all other types,

- **lineMaxUnit** - maximum value for the outcome, in market units for this market (eg 100 runs).
- **lineMinUnit** - minimum value for the outcome, in market units for this market (eg 0 runs).
- **lineInterval** - the odds ladder on this market will be between the range of **lineMinUnit** and **lineMaxUnit**, in increments of the interval value.e.g. If **lineMinUnit**=10 runs, **lineMaxUnit**=20 runs, **lineInterval**=0.5 runs, then valid odds include 10, 10.5, 11, 11.5 up to 20 runs.

For updates for Orders on Line markets received on the Order Stream be aware of how the following properties behave,

- **price** - line markets operate at even-money odds of 2.0. However, price for these markets refers to the line positions available as defined by the markets min-max range and interval steps.
- **side** - for Line markets a 'B' bet refers to a SELL line and an 'L' bet refers to a BUY line.
- **averagePriceMatched** - this value is not meaningful for activity on Line markets and is not guaranteed to be returned or maintained for these markets.

Stream API Status - latency

Every **ChangeMessage**, for order and market stream, contains a **'status'** field which will give an indication on the health of the stream data provided by the service. This is feature will be used in addition to the heartbeat mechanism which only gives an indication that the service is up but doesn't provide an indication of the latency of the data provided.

By default, when the stream data is up to date the value is set to null and will be set to **503** when the stream data is unreliable (i.e. not all bets and markets changes will be reflected on the stream) due to an increase in push latency. Clients **shouldn't** disconnect if status 503 is returned; when the stream recovers updates will be sent containing the latest data. The status is sent per each subscription on heartbeats and change messages.

Example of message containing the status field:

```
{"op":"ocm","id":3,"clk":"AAAAAAA","status":503,"pt":1498137379766,"ct":"HEARTBEAT"}
{"op":"mcm","id":2,"clk":"AAAAAAA","status":503,"pt":1498137381621,"ct":"HEARTBEAT"}
```

Stream Health

In addition to the Stream API status field we'd recommend the below as best practice for monitoring the health of the Stream API:

- Use heartbeat messages to confirm Stream API is healthy and that you are still connected
- Messages with ChangeType.HEARTBEAT will be sent at the requested interval if no change has occurred.
- If no message of any kind is received for 2 x heartbeat interval then you may no longer be connected so initiate a fresh connection (use re-subscribe to continue where you left off)
- Re-connect code should contain back offs to avoid spamming the service if you are unable to connect for a prolonged period for any reason
- if you receive con=true flag on a market - then you are consuming data slower than the rate of deliver. If the socket buffer is full we won't attempt to push; so the next push will be conflated.

Lapse Status Reason Code Possible Values

This field will now be present in some cases on the Order object of the Order Stream to denote the reason that some or all of the order is lapsed. It will be null if no portion of the order is lapsed or if the order lapsed for some reason other than those listed below.

The full list of currently supported values for this field is:

Code	Description
MKT_UNKNO WN	The market was unknown, presumably removed from the matcher (closed) between bet placement and matching.
MKT_INVALID	The market was known about, but in an invalid state.
RNR_UNKNO WN	The runner was unknown, presumably removed between bet placement and matching.
TIME_ELAPSED	The bet was waiting in the queue too long, so was lapsed for safety.
CURRENCY_U NKNOWN	The bet's currency ID was not recognised by the matcher.
PRICE_INVALID	The bet's price was invalid, e.g. outside the defined ladder for the market.
MKT_SUSPEN DED	The market was suspended at the time the bet came to be matched.
MKT_VERSION	The bet had a maximum market version set, and the market's version on matching was greater than this.
LINE_TARGET	The bet was on a line market, but was requested targeting profit or payout.
LINE_SP	The bet was on a line market, but was either a BSP bet directly, or requested to PERSIST_TO_SP.
SP_IN_PLAY	The bet was a BSP bet that had somehow come to be placed after turn-in-play.
SMALL_STAKE	The bet's stake was worth less than half a penny in GBP.
PRICE_IMP_T OO_LARGE	When the bet came to be matched, the price available was better than its best permitted price, suggesting a significant shift in the market, presumably due to a major incident, which may have rendered the bet unwanted.

Offline Documentation

An offline version of the Exchange Stream API is available via [ExchangeStreamAPI-March2018.pdf](#)

Please note, the full Exchange Stream API specification is available online [here](#)

Known Issues

- **Markets moved under a new eventId** - In certain circumstances, a market may move from one eventId to another due to actions performed by our Exchange Operations team. This will cause the Exchange Stream API to hold two copies of the market in its cache and the initial image of the market provided will therefore contain both copies of the market. In these circumstances further Stream API updates will only be sent for the latest version of the market. You can identify the latest version of the market using the "version" parameter returned in the initial image and should only store the market with the higher version number.
- **Trades with volume = 0 for all traded price points- e.g.** [{"trd":[[1.75,0],[1.5,0],[1.25,0],[1.32,0],[1.57,0],[2.86,0],[1.82,0],[2.36,0],[1.76,0],[2.48,0],[1.51,0],[2.98,0],[1.26,0]...} - This is an artefact of settlement kicking off that moves the bets away from trading DB into the longer-term store. Any price change notifications triggered during this process will result in attempts to reconstruct the market view based on no bets being available and would result in this kind of notification being sent.